

OTM Spare Parts Management

Maintenance Modules

Maintenance Management
Spare Parts Management
Calibration Management
Facility Management

Asset Reliability

Failure Mode Effects and Critical Analysis
Reliability Block Diagram
Reliability Availability Maintainability
Reliability Centered Maintenance

The unique software suite of engineering and managerial instruments that implement Reliability & Maintenance Engineering methodologies, by integrating with that of the Management and Optimization of Maintenance and Spare parts

In industrial Maintenance context, the material management requires a significant role for the aspects such as warehouse logistics (characterization of the stocking locations, localization of spare parts and materials of use, monitoring of availability in real time for those connected materials (pickup management, traceability of the parts employed in the interventions). In the company these arguments are normally linked to an administration of the same materials (supplier management, documentation material reception by the suppliers), and are typically supported by dedicated applications of the operational management.

In complex situations, the availability of an instrument that integrates all these functionalities improves and simplifies the operations significantly.

MODULE OF "MATERIALS" IN OTM SUITE

The module "Materials" in **OTM** is a valid instrument to handle fully all the aspects described before and in a simple way.

The materials module of **OTM**, which is thought as a component of a wide solution of modules integrated easily, represents the first step towards the implementation of a complete system of management of the maintenance.

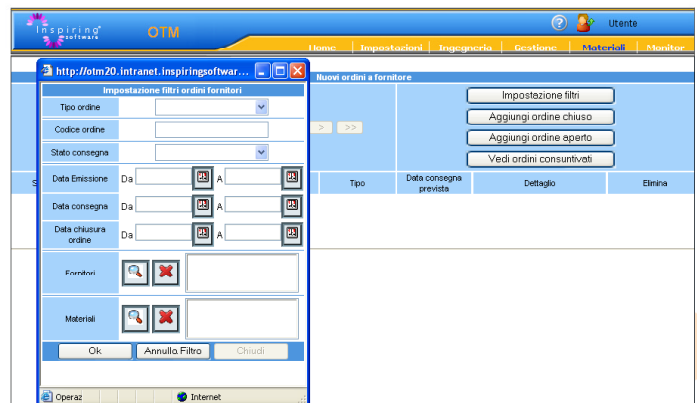
It is capable of covering the innovative and strategic needs of the companies such as the ones in maintenance engineering. In line with the general philosophy of the entire suite, this module is characterized for an intensive use of user-friendly graphical interfaces.

The operator has always the scenario under control. He can see the problems to face, the available resources and choices, the on-going operations and their progress, archive of the concluded operations. It lays out all the conditions for an execution, a punctual control and effective maintenance.

Functionality of the Materials Module of Otm

The module covers all the aspects of the cycle of maintenance activities in business environment that could be multi-site and multi-facility:

- the materials, which **OTM** keeps "under control" during their life cycle;
- the company assets subject to maintenance, that **OTM** allows describing in a simple and rapid way, and on which the materials are active;
- the management and the maintenance actions, that **OTM** formalizes and documents even during their execution, full of information on the asset under maintenance with the materials.



The execution of effective maintenance operations supported by **OTM** with the tested and verified business practices link the other phases as in the following:

- emission of an intervention request for an asset.
- verification of the availability of materials and their intervention approvals.
- execution of the operation: collection of necessary materials, effective execution of the work and conclusion of the operations
- closing of the intervention.

OTM helps approach all this in an integrated manner by offering: **management of materials, from the point of view of stocking warehouses:**

- Definition of the stocking facilities of the materials.
The use of a hierarchical intuitive and fast model, allows describing the sites, warehouses with the possibility of indicating the preferred allocations for particular materials.
- Materials data;
- Suppliers data;
- Reception of materials to the company from the suppliers (entry documents, eventual matriculation of the materials);
- Allocation of entering materials in the warehouses;
- Monitoring of the physical stock of materials at the warehouse and those employed;

- Controlling of the availability level at the warehouses with the most diffused warehouse management policies and reorder request emissions.
- Research of materials in the facilities of stocking.
- Materials inventory with the possibility of adjustment.
- Logistics efficiency measuring of KPIs of the warehouses (capacity use, materials rotation index, materials usage rate, average stock, etc.).

Codice	Tipo ordine	Fornitore	Stato	Data emissione	Detl.
ordc1_sede2	Chiuso	for2	Nuovo	16-02-2007	
ordc2_g1	Chiuso	for4	Nuovo	20-02-2007	
reso1_notat1_m1_ir1_st1s1_guasto	Reso		Nuovo	01-03-2007	
reso_generico1	Reso		Nuovo	02-03-2007	

Codice	Data	Operatore	Richiesta di lavoro	Risorsa Macro	Sutlu Assieme	Detl.
1	16-02-2007	pltoplmi	rdly_m1_ir1_st1s1			
2	16-02-2007	tpotpni	rdlx1_m1_ir1_st1s1			
1	20-02-2007	tpotpni	rdl1_m1_ir1_st1s2			
2	20-02-2007	tpotpni	rdl2_m1_ir1_st1s1			

Codice	Data Inizio Lavoro	Data Fine Lavoro	Detl.
rdl1_m2_ir1_st1s1	14-02-2007 00:00	14-02-2007 00:00	
rdl2_m1_ir1_st1s1	15-02-2007 00:00	15-02-2007 00:00	
rdl3_m1_ir1_st1s1	15-02-2007 00:00	15-02-2007 00:00	
rdlx1_m1_ir1_st1s1	15-02-2007 00:00	15-02-2007 00:00	
rdly_m1_ir1_st1s1	15-02-2007 00:00	15-02-2007 00:00	
rdl1_m1_ir1_st1s2	16-02-2007 00:00	16-02-2007 00:00	
rdlx_sai_gf1m2_ir1_st1s	23-02-2007 00:00	23-02-2007 00:00	

Management of Materials, from the view point of workload for the maintenance actions:

- Pickup about the execution of single maintenance actions.
- Traceability of the pick-up operations (association of picked materials to the maintenance operations).
- Traceability of the operations of material restoring to the warehouses from the company assets, or for those materials picked up but not utilized by the machines and subsystems.
- Monitoring of the "current position" of a spare part material (in warehouse, in use for a maintenance, mounted on an asset).
- Automatic updating of the available stock at warehouse after the setup or simply programming for a future maintenance action (material reservation).
- Automatic updating of the stock at warehouse for material return from the maintenance operations

Description of the assets subject to maintenance:

- the assets are described via an hierarchical model for site, facility, divisions, machines etc... analogous to that of the facilities of material stocking. In this case this type of representation is more efficient.

Management and control of the maintenance actions:

from the pickup of the necessary materials to the execution of an intervention, and the work until its termination and archival:

- Generation of intervention request related with an asset (corrective or preventive).
- Verification of availability of the materials, generation of the pickup sheet with reservation of the material from the warehouse stocks.
- Effective pick-up.
- Matching of picked up materials to the particular intervention request.
- Execution of the intervention passing progressive phases (approval, execution, conclusion and final accounting).
- Matching of materials employed at the assets subject to work.
- Documented restoring to the warehouse of disassembled or non utilized materials.

Dashboards

All the exposed functionalities are completed from the target dashboards to give a fast and effective representation of the general situation of the material entry activities, lack of materials, quantity and state of the on-going maintenance actions.

Consulting and Training

Inspiring Software enlarges its innovative product portfolio by providing also on-site training and consulting, thanks to Inspiring Consulting.

We guarantee tangible results in a short term to our clients in the area of operations, especially in Manufacturing Excellence in Maintenance Management and Energy Management.

Available solutions:

BLINK - Energy Efficiency

Integrated and multidisciplinary Software Suite to optimize and reduce the energy consumption costs.

OTM - Maintenance & Reliability

Integrated Software Suite for the analysis of Reliability, Engineering and Management of Maintenance (RAM, RCM, EAM/ CMMS).

FDS - Data Historians & Performance

The advanced MES Module of Data Historians and Performance Analysis.



20060 Bussero (Milano) Italy - Via Milano, 15/i
Tel. +39 02 95038260 - Fax +39 02 95039892

mkt@inspiring-group.com - www.inspiring-group.com